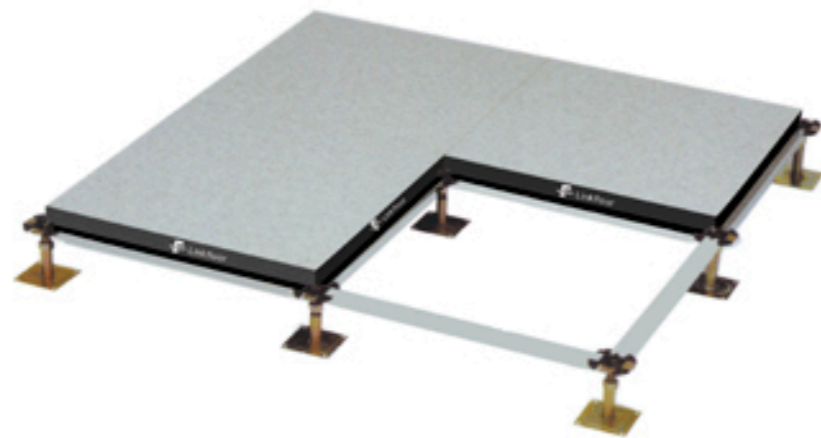


RUBBER

This flooring is composed of two sheets of natural and synthetic, mineral batches and stainers. It is recommend for heavy-traffic floorings and anywhere hygienic, easily maintained, long lasting surfaces are required.

Technical Characteristics:

Thickness:	From 2.0 mm to 4.0mm
Weigh:	From 3.2 to 6.5 Kg/sqm
Fire Rating:	Class A
Soundproofing:	5-10 dB
Electric Resistance:	10 ⁶ -10 ¹⁰ ohm

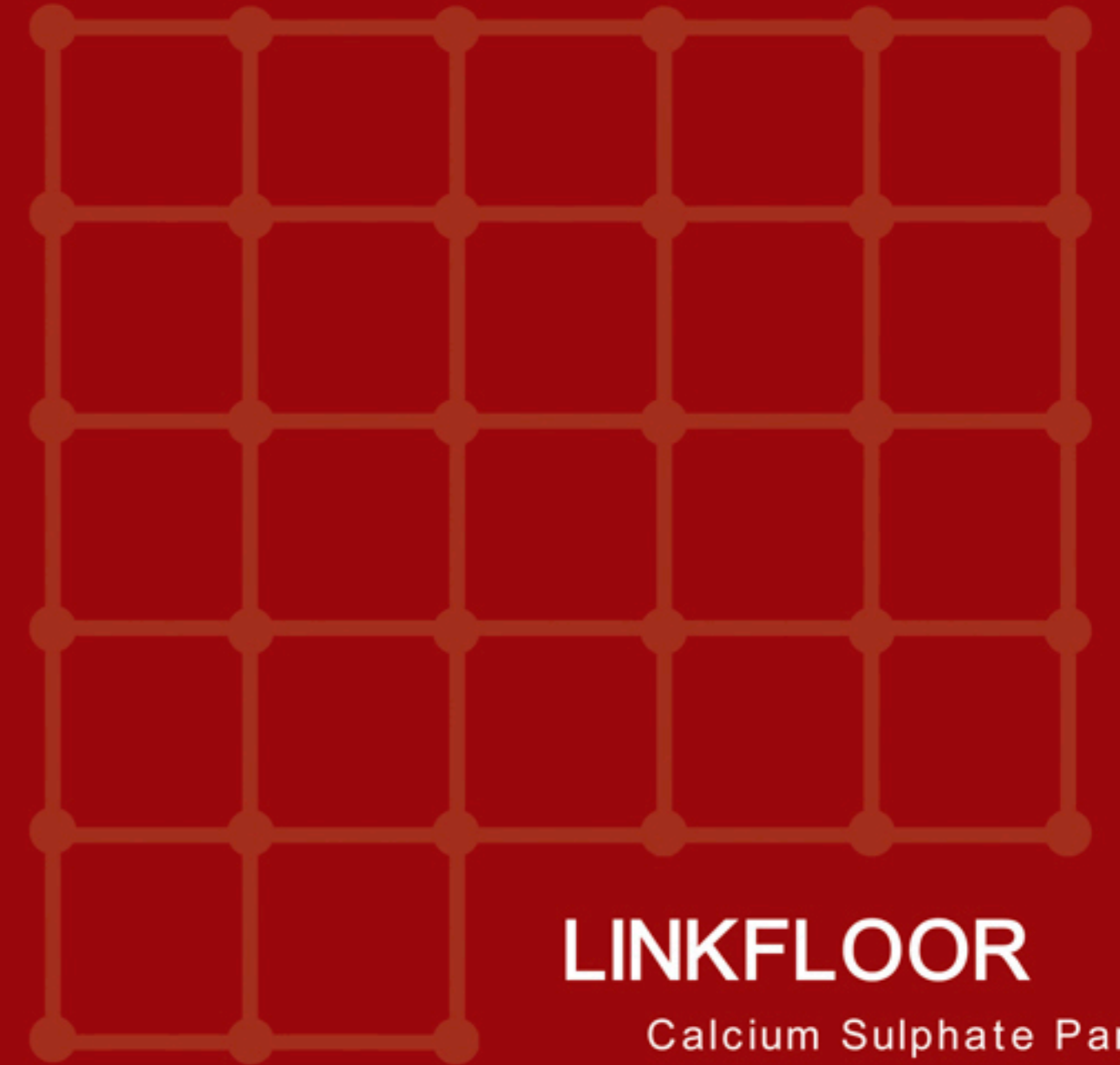


We will meet the needs of all customers with zero defects and continuously improve our products and services.



CHANGZHOU LIANGFENG COMPUTER-ROOM EQUIPMENT CO.,LTD

Add; HengLin Northern Industrial Zone 213101,
Changzhou, Jiangsu, China
Tel; 86-519-8491055 8491066 8491022
Fax; 86-519-8491033 8491200
Website; www.cnliangfeng.com
E-mail; selinagu@cnliangfeng.com
frankren@cnliangfeng.com



LINKFLOOR

Calcium Sulphate Panel

Linkfloor Calcium Sulphate Panel System

Linkfloor panel system meets all requirements relating to fire protection, noise protection, electrostatics, load-bearing, heating and cooling technology etc ...

PANEL DISCRPTION

Mineral inert fireproof conglomerate made of calcium sulphate with optimum mechanical characteristics, density of 1450Kg/m³ and thickness 30 mm(Total thickness 32mm).

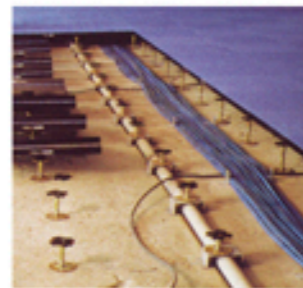
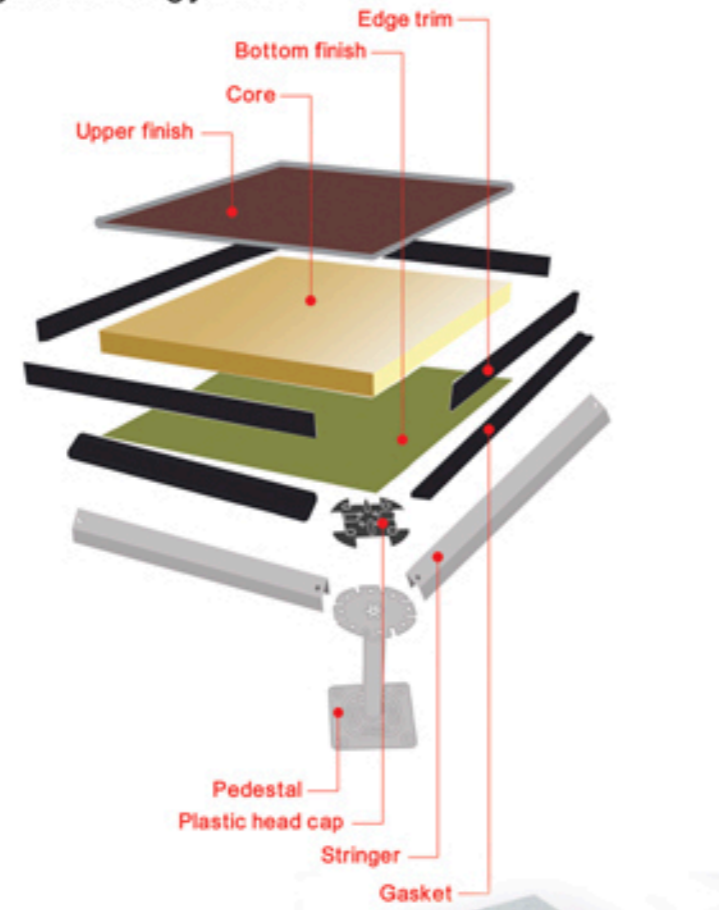
Made stronger by particular fibres, the material is extremely dense and compact so to allow the calcium sulphate panel to be very silent. Thanks to its characteristics of stability, the panels don't suffer for variation of temperature and humidity.

Panels are based on a 600mm square module constructed around core. There are no limits to the application of any finishing on the panel. The bottom side can be sheltered by an aluminium foil, galvanized steel sheet or coated steel sheet. The panel edges are then liminated with self-extinguishing, non-creaking black plastic materials which provides protection to the core and surface covering. Electrical continuity is provided through the panel construction to the steel base and hence to the pedestals.

SUBSTRUCTURE: Steel Systems

Stringer: Stringer is used to improve the stability, the rigidity of the structure, the bearing capacity of the whole system. They are individually and rigidly fastened to the pedestal with one machine screw for each foot of stringer length. It boasts solid tube construction to resist bowing and spreading during load impacts, and a solid vinyl strip for a snug, quiet fit between stringer and panel.

Pedestal: The pedestal design utilizes a 90mm diameter head which allows the us of standard plastic head caps. The baseplate is nominally 100mm square and includes provision for the use of mechanical fixing to the sub-floor in addition to the use of pedestal adhesive if required. The pedestal head design allows for the use of bolt-on stringers if required.



TYPICAL AREAS OF APPLICATION

- ◆ IT rooms and switching centres.
- ◆ Control stations, Telecom rooms, TV studios.
- ◆ Power stations, Industrial rooms, ...
- ◆ Computer rooms, laboratories of analysis, etc.
- ◆ Office and designing areas.
- ◆ Schools and shopping centres.
- ◆ Banking and insurance.

FEATURE BENEFITS

- ◆ Made from regenerative raw material
- ◆ Hazard-free and emission-free
- ◆ Good acoustic performance
- ◆ Excellent grounding and electrical continuity
- ◆ Solid underfoot
- ◆ Class A flame spread and smoke development rating
- ◆ Excellent load-bearing capacity
- ◆ Excellent lateral stability

TECHNICAL SPECIFICATION

General Characteristics			
Size	600x600±0.3mm		
Thickness without covering	30±0.3mm		
Panel weight (kg)	15.6±3%		
Density (kg/m ³)	1450±50		
Walking sound level at 500Hz	20dB		
Fireproof rating	Class A		
Fire rating	90minutes		
Size variations after 24h of immersion into water	0.7%		
Max. water absorption	20%		
Electrical resistance for non-conductive panels(Ohm)	10 ⁶ -10 ¹⁰		
constructure			
PanelLoad 2.5mm deflection	HPL/Core/Steel	Vinyl/Core/Steel	Steel/Core/Steel
Concentrated Load(N)	5000	4500	6000
Uniform Load(N/m ²)	24500	22000	30000
Ultimate Load(N)	15000	13500	18000
Impact Load(N)	670	670	780



CORVERING

The top side can be completed with a large range of different coverings, every technical and aesthetic request can be satisfied in any environment and there are no limits to the application on the panels of every kind of finishing. Without modifying the characteristics of the panels, the coverings can be realized in the following versions:

- ◆ Antistatic HPL
- ◆ Antistatic or conductive homogeneous PVC
- ◆ Rubber
- ◆ Galvanized steel, Aluminum sheet, Coated steel plate

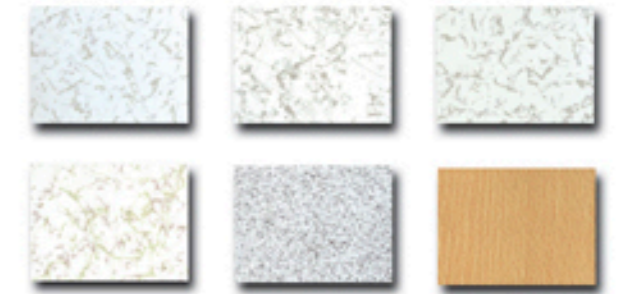
According to the destination and the use, all the coverings have reaction to the fire Class A and various values of antistaticity.

HIGH PRESSURE LAMINATE (HPL)

HPL are manufactured through high temperature and high pressure by impregnated melamine paper and phenolic paper. It's colorful, flatness, with properties of wear-resistance, heat-resistance, dirty-resistance, clearance maintainance and permanent decoration etc. It is widely employed in Data Processing Departments, in computer rooms, laboratories and any room where cleaning, ease of maintenance and wear resistance are required.

Technical Characteristics:

Thickness:	From 1.0mm to 3.0mm
Weight Density:	1450Kgs/m ³
Abrasion Resistance:	>3000 REV.
Fire Rating:	Class A
Electric Resistance:	10 ⁶ -10 ¹⁰ ohm



CONDUCTIVE & STATIC DISSIPATIVE VINYL TILE

Composed of poly vinyl chloride (P.V.C) joined with plasticizers, stabilizers, inert charges and dyes. It is usually employed in purification workshops, computer rooms, Electric and telephonic plants and has a good acid resistance and cleanability. It can be supplied as antistatic or conductive.

Technical Characteristics:

Thickness:	From 2.0 mm to 3.0mm
Weight:	From 3.5 to 5.2Kgs/sqm
Sound proofing:	3 dB
Abrasion resistance:	< 2.0mm3(EN660P12)
Fire Rating:	Class A
Electric Resistance:	10 ⁵ -10 ⁹ ohm

